

Mouse TREM2 Protein

Cat. No. TRM-MM101

Description

| | |
|-------------------------|--|
| Source | Recombinant Mouse TREM2 Protein is expressed from HEK293 with His tag at the C-Terminus. It contains Leu19-Ser171. |
| Accession | Q99NH8-1 |
| Molecular Weight | The protein has a predicted MW of 17.9 kDa. Due to glycosylation, the protein migrates to 35-45 kDa based on Bis-Tris PAGE result. |
| Endotoxin | Less than 1EU per ug by the LAL method. |
| Purity | > 95% as determined by Bis-Tris PAGE |

Formulation and Storage

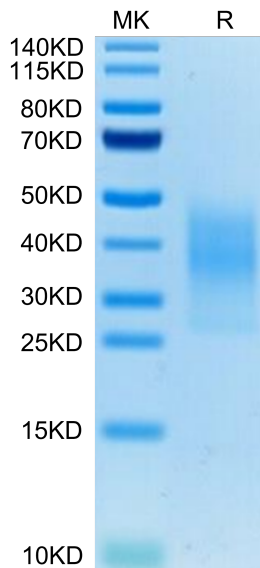
| | |
|-----------------------|---|
| Formulation | Lyophilized from 0.22µm filtered solution in PBS (pH 7.4). Normally 8% trehalose is added as protectant before lyophilization. |
| Reconstitution | Centrifuge the tube before opening. Reconstituting to a concentration more than 100 µg/ml is recommended. Dissolve the lyophilized protein in distilled water. |
| Storage | -20 to -80°C for 24 months as supplied from date of receipt. -80°C for 3 months after reconstitution. Recommend to aliquot the protein into smaller quantities for optimal storage. Please minimize freeze-thaw cycles. |

Background

TREM-2 (Triggering Receptor Expressed on Myeloid cells-2) is a 35 kDa type I transmembrane member of the TREM family and Ig superfamily. Mature human TREM-2 consists of a 156 amino acid (aa) extracellular domain (ECD) with one V-type Ig-like domain, a 21 aa transmembrane (TM) domain, and a 35 aa cytoplasmic tail. TREM-2 forms a receptor signaling complex with TYROBP which mediates signaling and cell activation following ligand binding (PubMed:10799849). Acts as a receptor for amyloid-beta protein 42, a cleavage product of the amyloid-beta precursor protein APP, and mediates its uptake and degradation by microglia.

Assay Data

Bis-Tris PAGE



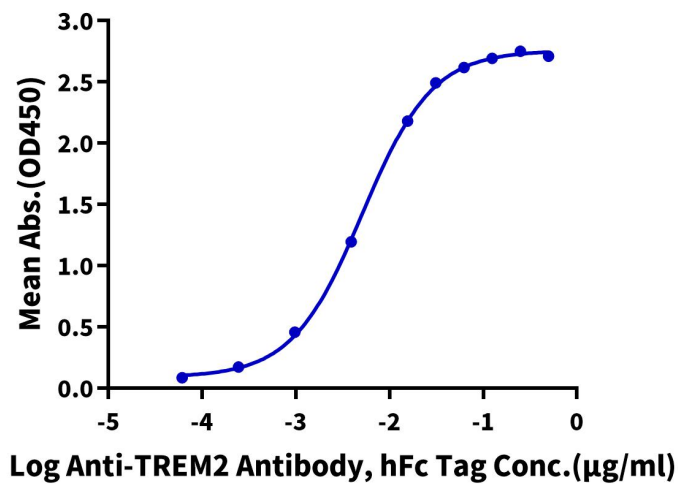
Mouse TREM2 on Bis-Tris PAGE under reduced condition. The purity is greater than 95%.

ELISA Data

Assay Data

Mouse TREM2, His Tag ELISA

0.1µg Mouse TREM2, His Tag Per Well



Immobilized Mouse TREM2, His Tag at 1µg/ml (100µl/well) on the plate. Dose response curve for Anti-TREM2 Antibody, hFc Tag with the EC50 of 5.1ng/ml determined by ELISA (QC Test).